

Uponor



 **PP-RCT CATALOG**

Hydronic heating and cooling
Industrial applications

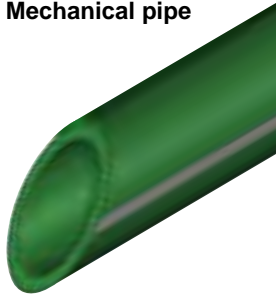
Uponor PP-RCT table of contents

Table of contents	1
Pipe	2
Fittings	3
Transitions	11
Accessories	13

Uponor PP-RCT pipe

Pipe

Mechanical pipe



Material: PP-RCT with fiber composite layer

Identification: SDR 7.4 and SDR 9, green with gray stripes; SDR 11 and SDR 17.6, solid green

Applications: Heating, cooling and industrial

Part no.	Part description	Pkg. qty.
SDR 7.4		
PR7231350	½" Uponor PP-RCT Mechanical Pipe, SDR 7.4 with Fiber, 13-ft. straight length	25
PR7231375	¾" Uponor PP-RCT Mechanical Pipe, SDR 7.4 with Fiber, 13-ft. straight length	20
SDR 9		
PR9231310	1" Uponor PP-RCT Mechanical Pipe, SDR 9 with Fiber, 13-ft. straight length	14
PR9231313	1¼" Uponor PP-RCT Mechanical Pipe, SDR 9 with Fiber, 13-ft. straight length	10
PR9231315	1½" Uponor PP-RCT Mechanical Pipe, SDR 9 with Fiber, 13-ft. straight length	8
PR9231320	2" Uponor PP-RCT Mechanical Pipe, SDR 9 with Fiber, 13-ft. straight length	5
PR9231925	2½" Uponor PP-RCT Mechanical Pipe, SDR 9 with Fiber, 19-ft. straight length	3
PR9231930	3" Uponor PP-RCT Mechanical Pipe, SDR 9 with Fiber, 19-ft. straight length	2
PR9231940	4" Uponor PP-RCT Mechanical Pipe, SDR 9 with Fiber, 19-ft. straight length	1
PR9231960	6" Uponor PP-RCT Mechanical Pipe, SDR 9 with Fiber, 19-ft. straight length	1
SDR 11		
PR11231310	1" Uponor PP-RCT Mechanical Pipe, SDR 11 with Fiber, 13-ft. straight length	14
PR11231313	1¼" Uponor PP-RCT Mechanical Pipe, SDR 11 with Fiber, 13-ft. straight length	10
PR11231315	1½" Uponor PP-RCT Mechanical Pipe, SDR 11 with Fiber, 13-ft. straight length	8
PR11231320	2" Uponor PP-RCT Mechanical Pipe, SDR 11 with Fiber, 13-ft. straight length	5
PR11231925	2½" Uponor PP-RCT Mechanical Pipe, SDR 11 with Fiber, 19-ft. straight length	3
PR11231930	3" Uponor PP-RCT Mechanical Pipe, SDR 11 with Fiber, 19-ft. straight length	2
PR11231940	4" Uponor PP-RCT Mechanical Pipe, SDR 11 with Fiber, 19-ft. straight length	1
PR11231960	6" Uponor PP-RCT Mechanical Pipe, SDR 11 with Fiber, 19-ft. straight length	1
PR11231980	8" Uponor PP-RCT Mechanical Pipe, SDR 11 with Fiber, 19-ft. straight length	1
PR112319100	10" Uponor PP-RCT Mechanical Pipe, SDR 11 with Fiber, 19-ft. straight length	1
PR112319120	12" Uponor PP-RCT Mechanical Pipe, SDR 11 with Fiber, 19-ft. straight length	1
SDR 17.6		
PR17231940	4" Uponor PP-RCT Mechanical Pipe, SDR 17.6 with Fiber, 19-ft. straight length	1
PR17231960	6" Uponor PP-RCT Mechanical Pipe, SDR 17.6 with Fiber, 19-ft. straight length	1
PR17231980	8" Uponor PP-RCT Mechanical Pipe, SDR 17.6 with Fiber, 19-ft. straight length	1
PR172319100	10" Uponor PP-RCT Mechanical Pipe, SDR 17.6 with Fiber, 19-ft. straight length	1
PR172319120	12" Uponor PP-RCT Mechanical Pipe, SDR 17.6 with Fiber, 19-ft. straight length	1

Uponor PP-RCT fittings

Fittings

Part no.	Part description	Pkg. qty.
PR4775050	Uponor PP-RCT Coupling, ½" x ½"	30
PR477575	Uponor PP-RCT Coupling, ¾" x ¾"	25
PR4771010	Uponor PP-RCT Coupling, 1" x 1"	20
PR4771313	Uponor PP-RCT Coupling, 1¼" x 1¼"	10
PR4771515	Uponor PP-RCT Coupling, 1½" x 1½"	6
PR4772020	Uponor PP-RCT Coupling, 2" x 2"	4
PR4772525	Uponor PP-RCT Coupling, 2½" x 2½"	2
PR4773030	Uponor PP-RCT Coupling, 3" x 3"	1
PR4774040	Uponor PP-RCT Coupling, 4" x 4"	1

Coupling
(socket fusion)



Uponor PP-RCT fittings

Fitting reducer (socket fusion)



Fitting reducers feature one socket end and one fitting socket end that must be used in conjunction with an appropriately sized straight coupling to complete a straight reduction. These fitting reducers can also be used in conjunction with socket tees or elbows to create a reducing fitting.

Note: Fitting reducers, where 4" is the larger end, can also be butt fused (using the 4" end). Ensure that the appropriate SDR is selected to match the pipe it's being fused to.

Part no.	Part description	Pkg. qty.
PR4777550	Uponor PP-RCT Fitting Reducer, 3/4" x 1/2"	30
PR4771050	Uponor PP-RCT Fitting Reducer, 1" x 1/2"	25
PR4771075	Uponor PP-RCT Fitting Reducer, 1" x 3/4"	20
PR4771350	Uponor PP-RCT Fitting Reducer, 1 1/4" x 1/2"	10
PR4771375	Uponor PP-RCT Fitting Reducer, 1 1/4" x 3/4"	10
PR4771310	Uponor PP-RCT Fitting Reducer, 1 1/4" x 1"	10
PR4771550	Uponor PP-RCT Fitting Reducer, 1 1/2" x 1/2"	6
PR4771575	Uponor PP-RCT Fitting Reducer, 1 1/2" x 3/4"	6
PR4771510	Uponor PP-RCT Fitting Reducer, 1 1/2" x 1"	6
PR4771513	Uponor PP-RCT Fitting Reducer, 1 1/2" x 1 1/4"	6
PR4772075	Uponor PP-RCT Fitting Reducer, 2" x 3/4"	10
PR4772010	Uponor PP-RCT Fitting Reducer, 2" x 1"	10
PR4772013	Uponor PP-RCT Fitting Reducer, 2" x 1 1/4"	10
PR4772015	Uponor PP-RCT Fitting Reducer, 2" x 1 1/2"	4
PR4772550	Uponor PP-RCT Fitting Reducer, 2 1/2" x 1/2"	4
PR4772575	Uponor PP-RCT Fitting Reducer, 2 1/2" x 3/4"	4
PR4772510	Uponor PP-RCT Fitting Reducer, 2 1/2" x 1"	4
PR4772513	Uponor PP-RCT Fitting Reducer, 2 1/2" x 1 1/4"	2
PR4772515	Uponor PP-RCT Fitting Reducer, 2 1/2" x 1 1/2"	2
PR4772520	Uponor PP-RCT Fitting Reducer, 2 1/2" x 2"	2
PR4773015	Uponor PP-RCT Fitting Reducer, 3" x 1 1/2"	2
PR4773020	Uponor PP-RCT Fitting Reducer, 3" x 2"	2
PR4773025	Uponor PP-RCT Fitting Reducer, 3" x 2 1/2"	2
PR94774025	Uponor PP-RCT Fitting Reducer, 4" x 2 1/2", SDR 9	1
PR114774025	Uponor PP-RCT Fitting Reducer, 4" x 2 1/2", SDR 11	1
PR174774025	Uponor PP-RCT Fitting Reducer, 4" x 2 1/2", SDR 17.6	1
PR94774030	Uponor PP-RCT Fitting Reducer, 4" x 3", SDR 9	1
PR114774030	Uponor PP-RCT Fitting Reducer, 4" x 3", SDR 11	1
PR174774030	Uponor PP-RCT Fitting Reducer, 4" x 3", SDR 17.6	1

Uponor PP-RCT fittings

Butt-to-socket fusion reducers feature one (larger) butt end and one (smaller) socket end.

Part no.	Part description	Pkg. qty.
PR94776040	Uponor PP-RCT Reducer, 6" x 4", SDR 9, Butt to Socket Fusion	1
PR114776040	Uponor PP-RCT Reducer, 6" x 4", SDR 11, Butt to Socket Fusion	1
PR174776040	Uponor PP-RCT Reducer, 6" x 4", SDR 17.6, Butt to Socket Fusion	1
PR94778040	Uponor PP-RCT Reducer, 8" x 4", SDR 9, Butt to Socket Fusion	1
PR114778040	Uponor PP-RCT Reducer, 8" x 4", SDR 11, Butt to Socket Fusion	1
PR174778040	Uponor PP-RCT Reducer, 8" x 4", SDR 17.6, Butt to Socket Fusion	1

Reducer
(butt to socket fusion)



Part no.	Part description	Pkg. qty.
PR94778060	Uponor PP-RCT Reducer, 8" x 6", SDR 9	1
PR114778060	Uponor PP-RCT Reducer, 8" x 6", SDR 11	1
PR174778060	Uponor PP-RCT Reducer, 8" x 6", SDR 17.6	1
PR174771060	Uponor PP-RCT Reducer, 10" x 6", SDR 17.6	1
PR174771080	Uponor PP-RCT Reducer, 10" x 8", SDR 17.6	1
PR174771280	Uponor PP-RCT Reducer, 12" x 8", SDR 17.6	1
PR174771210	Uponor PP-RCT Reducer, 12" x 10", SDR 17.6	1

Reducer
(butt fusion)



Part no.	Part description	Pkg. qty.
PR4350500	Uponor PP-RCT End Cap, 1/2"	30
PR4350750	Uponor PP-RCT End Cap, 3/4"	25
PR4351000	Uponor PP-RCT End Cap, 1"	20
PR4351250	Uponor PP-RCT End Cap, 1 1/4"	10
PR4351500	Uponor PP-RCT End Cap, 1 1/2"	6
PR4352000	Uponor PP-RCT End Cap, 2"	4
PR4352500	Uponor PP-RCT End Cap, 2 1/2"	2
PR4353000	Uponor PP-RCT End Cap, 3"	1
PR4354000	Uponor PP-RCT End Cap, 4"	1

End cap
(socket fusion)



Part no.	Part description	Pkg. qty.
PR9435600	Uponor PP-RCT End Cap, 6", SDR 9	1
PR1143560	Uponor PP-RCT End Cap, 6", SDR 11	1
PR1743560	Uponor PP-RCT End Cap, 6", SDR 17.6	1
PR1743580	Uponor PP-RCT End Cap, 8", SDR 17.6	1
PR17435100	Uponor PP-RCT End Cap, 10", SDR 17.6	1
PR17435120	Uponor PP-RCT End Cap, 12", SDR 17.6	1

End cap
(butt fusion)



Uponor PP-RCT fittings

90 street elbow (socket fusion)



Part no.	Part description	Pkg. qty.
PR4439050	Uponor PP-RCT 90 Street Elbow, 1/2" x 1/2"	10
PR4439075	Uponor PP-RCT 90 Street Elbow, 3/4" x 3/4"	10
PR4439010	Uponor PP-RCT 90 Street Elbow, 1" x 1"	10

90 elbow (socket fusion)



Part no.	Part description	Pkg. qty.
PR4769050	Uponor PP-RCT 90 Elbow, 1/2" x 1/2"	30
PR4769075	Uponor PP-RCT 90 Elbow, 3/4" x 3/4"	25
PR4769010	Uponor PP-RCT 90 Elbow, 1" x 1"	20
PR4769013	Uponor PP-RCT 90 Elbow, 1 1/4" x 1 1/4"	10
PR4769015	Uponor PP-RCT 90 Elbow, 1 1/2" x 1 1/2"	6
PR4769020	Uponor PP-RCT 90 Elbow, 2" x 2"	4
PR4769025	Uponor PP-RCT 90 Elbow, 2 1/2" x 2 1/2"	1
PR4769030	Uponor PP-RCT 90 Elbow, 3" x 3"	1
PR4769040	Uponor PP-RCT 90 Elbow, 4" x 4"	1

90 elbow fabricated (butt fusion)



Part no.	Part description	Pkg. qty.
PR947690600	Uponor PP-RCT 90 Elbow, Mechanical, 6" x 6", SDR 9	1
PR1147690600	Uponor PP-RCT 90 Elbow, Mechanical, 6" x 6", SDR 11	1
PR174769060	Uponor PP-RCT 90 Elbow, Mechanical, 6" x 6", SDR 17.6	1
PR947690800	Uponor PP-RCT 90 Elbow, Mechanical, 8" x 8", SDR 9	1
PR174769080	Uponor PP-RCT 90 Elbow, Mechanical, 8" x 8", SDR 17.6	1
PR174769010	Uponor PP-RCT 90 Elbow, Mechanical, 10" x 10", SDR 17.6	1
PR174769012	Uponor PP-RCT 90 Elbow, Mechanical, 12" x 12", SDR 17.6	1

45 street elbow (socket fusion)



Part no.	Part description	Pkg. qty.
PR4434550	Uponor PP-RCT 45 Street Elbow, 1/2" x 1/2"	10
PR4434575	Uponor PP-RCT 45 Street Elbow, 3/4" x 3/4"	10
PR4434510	Uponor PP-RCT 45 Street Elbow, 1" x 1"	10

Uponor PP-RCT fittings

Part no.	Part description	Pkg. qty.
PR4764550	Uponor PP-RCT 45 Elbow, 1/2" x 1/2"	30
PR4764575	Uponor PP-RCT 45 Elbow, 3/4" x 3/4"	25
PR4764510	Uponor PP-RCT 45 Elbow, 1" x 1"	20
PR4764513	Uponor PP-RCT 45 Elbow, 1 1/4" x 1 1/4"	10
PR4764515	Uponor PP-RCT 45 Elbow, 1 1/2" x 1 1/2"	6
PR4764520	Uponor PP-RCT 45 Elbow, 2" x 2"	4
PR4764525	Uponor PP-RCT 45 Elbow, 2 1/2" x 2 1/2"	1
PR4764530	Uponor PP-RCT 45 Elbow, 3" x 3"	1
PR4764540	Uponor PP-RCT 45 Elbow, 4" x 4"	1

45 elbow
(socket fusion)



Part no.	Part description	Pkg. qty.
PR947645600	Uponor PP-RCT 45 Elbow, Mechanical, 6" x 6", SDR 9	1
PR1147645600	Uponor PP-RCT 45 Elbow, Mechanical, 6" x 6", SDR 11	1
PR174764560	Uponor PP-RCT 45 Elbow, Mechanical, 6" x 6", SDR 17.6	1
PR174764580	Uponor PP-RCT 45 Elbow, Mechanical, 8" x 8", SDR 17.6	1
PR174764510	Uponor PP-RCT 45 Elbow, Mechanical, 10" x 10", SDR 17.6	1
PR174764512	Uponor PP-RCT 45 Elbow, Mechanical, 12" x 12", SDR 17.6	1

45 elbow fabricated
(butt fusion)



Part no.	Part description	Pkg. qty.
PR4755050	Uponor PP-RCT Tee, 1/2" x 1/2" x 1/2"	30
PR4757575	Uponor PP-RCT Tee, 3/4" x 3/4" x 3/4"	25
PR4751000	Uponor PP-RCT Tee, 1" x 1" x 1"	20
PR4751250	Uponor PP-RCT Tee, 1 1/4" x 1 1/4" x 1 1/4"	10
PR4751500	Uponor PP-RCT Tee, 1 1/2" x 1 1/2" x 1 1/2"	6
PR4752000	Uponor PP-RCT Tee, 2" x 2" x 2"	4
PR4752500	Uponor PP-RCT Tee, 2 1/2" x 2 1/2" x 2 1/2"	1
PR4753000	Uponor PP-RCT Tee, 3" x 3" x 3"	1
PR4754000	Uponor PP-RCT Tee, 4" x 4" x 4"	1

Tee
(socket fusion)



Uponor PP-RCT fittings

Tee (butt fusion)



Part no.	Part description	Pkg. qty.
PR9475600	Uponor PP-RCT Tee, Mechanical, 6" x 6" x 6", SDR 9	1
PR11475600	Uponor PP-RCT Tee, Mechanical, 6" x 6" x 6", SDR 11	1
PR17475600	Uponor PP-RCT Tee, Mechanical, 6" x 6" x 6", SDR 17.6	1
PR9475800	Uponor PP-RCT Tee, Mechanical, 8" x 8" x 8", SDR 9	1
PR17475800	Uponor PP-RCT Tee, Mechanical, 8" x 8" x 8", SDR 17.6	1
PR17475100	Uponor PP-RCT Tee, Mechanical, 10" x 10" x 10", SDR 17.6	1
PR17475120	Uponor PP-RCT Tee, Mechanical, 12" x 12" x 12", SDR 17.6	1

Reducing tee (socket fusion)



Part no.	Part description	Pkg. qty.
PR4755075	Uponor PP-RCT Reducing Tee, 1/2" x 1/2" x 3/4"	25
PR4757550	Uponor PP-RCT Reducing Tee, 3/4" x 3/4" x 1/2"	25
PR4751550	Uponor PP-RCT Reducing Tee, 1" x 1/2" x 1/2"	20
PR4751775	Uponor PP-RCT Reducing Tee, 1" x 3/4" x 3/4"	20
PR4751150	Uponor PP-RCT Reducing Tee, 1" x 1" x 1/2"	20
PR4751175	Uponor PP-RCT Reducing Tee, 1" x 1" x 3/4"	20
PR4751350	Uponor PP-RCT Reducing Tee, 1 1/4" x 1 1/4" x 1/2"	10
PR4751375	Uponor PP-RCT Reducing Tee, 1 1/4" x 1 1/4" x 3/4"	10
PR4751331	Uponor PP-RCT Reducing Tee, 1 1/4" x 1 1/4" x 1"	10
PR4751575	Uponor PP-RCT Reducing Tee, 1 1/2" x 1 1/2" x 3/4"	6
PR4751551	Uponor PP-RCT Reducing Tee, 1 1/2" x 1 1/2" x 1"	6
PR4751553	Uponor PP-RCT Reducing Tee, 1 1/2" x 1 1/2" x 1 1/4"	6
PR4752210	Uponor PP-RCT Reducing Tee, 2" x 2" x 1"	4
PR4752213	Uponor PP-RCT Reducing Tee, 2" x 2" x 1 1/4"	4
PR4752215	Uponor PP-RCT Reducing Tee, 2" x 2" x 1 1/2"	4
PR4752575	Uponor PP-RCT Reducing Tee, 2 1/2" x 2 1/2" x 3/4"	1
PR4752510	Uponor PP-RCT Reducing Tee, 2 1/2" x 2 1/2" x 1"	1
PR4752513	Uponor PP-RCT Reducing Tee, 2 1/2" x 2 1/2" x 1 1/4"	1
PR4752515	Uponor PP-RCT Reducing Tee, 2 1/2" x 2 1/2" x 1 1/2"	2
PR4752520	Uponor PP-RCT Reducing Tee, 2 1/2" x 2 1/2" x 2"	1
PR4753310	Uponor PP-RCT Reducing Tee, 3" x 3" x 1"	1
PR4753313	Uponor PP-RCT Reducing Tee, 3" x 3" x 1 1/4"	1
PR4753315	Uponor PP-RCT Reducing Tee, 3" x 3" x 1 1/2"	1
PR4753320	Uponor PP-RCT Reducing Tee, 3" x 3" x 2"	1
PR4753325	Uponor PP-RCT Reducing Tee, 3" x 3" x 2 1/2"	1
PR4754425	Uponor PP-RCT Reducing Tee, 4" x 4" x 2 1/2"	1
PR4754430	Uponor PP-RCT Reducing Tee, 4" x 4" x 3"	1

Uponor PP-RCT fittings

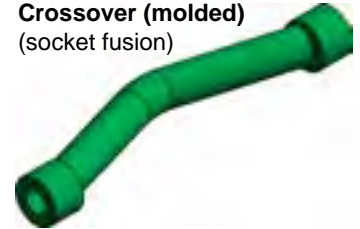
Part no.	Part description	Pkg. qty.
PR947566400	Uponor PP-RCT Reducing Tee, Mechanical, 6" x 6" x 4", SDR 9	1
PR1147566400	Uponor PP-RCT Reducing Tee, Mechanical, 6" x 6" x 4", SDR 11	1
PR1747566400	Uponor PP-RCT Reducing Tee, Mechanical, 6" x 6" x 4", SDR 17.6	1
PR1747588400	Uponor PP-RCT Reducing Tee, Mechanical, 8" x 8" x 4", SDR 17.6	1

Reducing tee
(butt fusion)



Part no.	Part description	Pkg. qty.
PR4485050	Uponor PP-RCT Crossover, Molded, 1/2" x 1/2"	10
PR4487575	Uponor PP-RCT Crossover, Molded, 3/4" x 3/4"	10
PR4481010	Uponor PP-RCT Crossover, Molded, 1" x 1"	5

Crossover (molded)
(socket fusion)



Uponor PP-RCT fittings

Saddle (outlet and socket fusion)



Part no.	Part description	Pkg. qty.
PR4781350	Uponor PP-RCT Saddle, 1¼" x ½", for Outlet Fusion	20
PR4781375	Uponor PP-RCT Saddle, 1¼" x ¾", for Outlet Fusion	20
PR4781550	Uponor PP-RCT Saddle, 1½" x ½", for Outlet Fusion	10
PR4781575	Uponor PP-RCT Saddle, 1½" x ¾", for Outlet Fusion	10
PR4782050	Uponor PP-RCT Saddle, 2" x ½", for Outlet Fusion	10
PR4782075	Uponor PP-RCT Saddle, 2" x ¾", for Outlet Fusion	10
PR4782010	Uponor PP-RCT Saddle, 2" x 1", for Outlet Fusion	10
PR4782550	Uponor PP-RCT Saddle, 2½" x ½", for Outlet Fusion	10
PR4782575	Uponor PP-RCT Saddle, 2½" x ¾", for Outlet Fusion	10
PR4782510	Uponor PP-RCT Saddle, 2½" x 1", for Outlet Fusion	10
PR4783050	Uponor PP-RCT Saddle, 3" x ½", for Outlet Fusion	10
PR4783075	Uponor PP-RCT Saddle, 3" x ¾", for Outlet Fusion	10
PR4783010	Uponor PP-RCT Saddle, 3" x 1", for Outlet Fusion	10
PR4784050	Uponor PP-RCT Saddle, 4" x ½", for Outlet Fusion	10
PR4784075	Uponor PP-RCT Saddle, 4" x ¾", for Outlet Fusion	10
PR4784010	Uponor PP-RCT Saddle, 4" x 1", for Outlet Fusion	10
PR4784013	Uponor PP-RCT Saddle, 4" x 1¼", for Outlet Fusion	5
PR4784015	Uponor PP-RCT Saddle, 4" x 1½", for Outlet Fusion	5
PR4784020	Uponor PP-RCT Saddle, 4" x 2", for Outlet Fusion	5
PR4786010	Uponor PP-RCT Saddle, 6" x 1", for Outlet Fusion	10
PR4786013	Uponor PP-RCT Saddle, 6" x 1¼", for Outlet Fusion	5
PR4786015	Uponor PP-RCT Saddle, 6" x 1½", for Outlet Fusion	5
PR4786020	Uponor PP-RCT Saddle, 6" x 2", for Outlet Fusion	5
PR4786025	Uponor PP-RCT Saddle, 6" x 2½", for Outlet Fusion	5
PR4786030	Uponor PP-RCT Saddle, 6" x 3", for Outlet Fusion	2
PR4788010	Uponor PP-RCT Saddle, 8" x 1", for Outlet Fusion	10
PR4788015	Uponor PP-RCT Saddle, 8" x 1½", for Outlet Fusion	4
PR4788020	Uponor PP-RCT Saddle, 8" x 2", for Outlet Fusion	4
PR4788025	Uponor PP-RCT Saddle, 8" x 2½", for Outlet Fusion	4
PR4788030	Uponor PP-RCT Saddle, 8" x 3", for Outlet Fusion	4
PR4788040	Uponor PP-RCT Saddle, 8" x 4", for Outlet Fusion	1
PR47810010	Uponor PP-RCT Saddle, 10" x 1", for Outlet Fusion	10
PR47810020	Uponor PP-RCT Saddle, 10" x 2", for Outlet Fusion	4
PR47810025	Uponor PP-RCT Saddle, 10" x 2½", for Outlet Fusion	4
PR47810030	Uponor PP-RCT Saddle, 10" x 3", for Outlet Fusion	4
PR47810040	Uponor PP-RCT Saddle, 10" x 4", for Outlet Fusion	1
PR47812020	Uponor PP-RCT Saddle, 12" x 2", for Outlet Fusion	4
PR47812025	Uponor PP-RCT Saddle, 12" x 2½", for Outlet Fusion	4
PR47812030	Uponor PP-RCT Saddle, 12" x 3", for Outlet Fusion	4
PR47812040	Uponor PP-RCT Saddle, 12" x 4", for Outlet Fusion	1

Uponor PP-RCT transitions

Transitions

Part no.	Part description	Pkg. qty.
PR2981500	Uponor PP-RCT Flange Adapter, 1½"	6
PR2982000	Uponor PP-RCT Flange Adapter, 2"	2
PR2982525	Uponor PP-RCT Flange Adapter, 2½", for Butterfly Valves	2
PR2983030	Uponor PP-RCT Flange Adapter, 3", for Butterfly Valves	2

Flange adapter
(socket fusion)



Note that the 4" flange adapters (PR929840, PR1129840 and PR1729840) can be butt fused or socket fused if used in conjunction with the Uponor PP-RCT Coupling, 4" x 4" (PR4774040).

Part no.	Part description	Pkg. qty.
PR929840	Uponor PP-RCT Flange Adapter, 4", SDR 9, Butt or Socket Fused with Coupling	1
PR1129840	Uponor PP-RCT Flange Adapter, 4", SDR 11, Butt or Socket Fused with Coupling	1
PR1729840	Uponor PP-RCT Flange Adapter, 4", SDR 17.6, Butt or Socket Fused with Coupling	1
PR929860	Uponor PP-RCT Flange Adapter, 6", SDR 9	1
PR1129860	Uponor PP-RCT Flange Adapter, 6", SDR 11	1
PR1729860	Uponor PP-RCT Flange Adapter, 6", SDR 17.6	1
PR929880	Uponor PP-RCT Flange Adapter, 8", SDR 9	1
PR1129880	Uponor PP-RCT Flange Adapter, 8", SDR 11	1
PR1729880	Uponor PP-RCT Flange Adapter, 8", SDR 17.6	1
PR17298100	Uponor PP-RCT Flange Adapter, 10", SDR 17.6	1
PR17298120	Uponor PP-RCT Flange Adapter, 12", SDR 17.6	1

Flange adapter
(butt fusion)



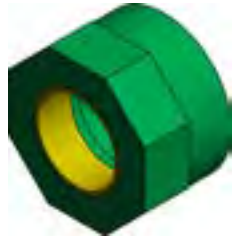
Part no.	Part description	Pkg. qty.
PR4720500	Uponor PP-RCT Brass Union, ½"	10
PR4720750	Uponor PP-RCT Brass Union, ¾"	10
PR4721000	Uponor PP-RCT Brass Union, 1"	5
PR4721250	Uponor PP-RCT Brass Union, 1¼"	3
PR4721500	Uponor PP-RCT Brass Union, 1½"	2
PR4722000	Uponor PP-RCT Brass Union, 2"	2

Brass union
(socket fusion)



Uponor PP-RCT transitions

Brass female threaded adapter (socket fusion)



Part no.	Part description	Pkg. qty.
PR5575050	Uponor Brass Female Threaded Adapter, 1/2" PP-RCT x 1/2" NPT	10
PR5577550	Uponor Brass Female Threaded Adapter, 3/4" PP-RCT x 1/2" NPT	10
PR5577575	Uponor Brass Female Threaded Adapter, 3/4" PP-RCT x 3/4" NPT	10
PR5571075	Uponor Brass Female Threaded Adapter, 1" PP-RCT x 3/4" NPT	10
PR5571010	Uponor Brass Female Threaded Adapter, 1" PP-RCT x 1" NPT	10
PR5571310	Uponor Brass Female Threaded Adapter, 1 1/4" PP-RCT x 1" NPT	6
PR5571313	Uponor Brass Female Threaded Adapter, 1 1/4" PP-RCT x 1 1/4" NPT	6
PR5571515	Uponor Brass Female Threaded Adapter, 1 1/2" PP-RCT x 1 1/2" NPT	4
PR5572020	Uponor Brass Female Threaded Adapter, 2" PP-RCT x 2" NPT	4

Brass male threaded adapter (socket fusion)



Part no.	Part description	Pkg. qty.
PR5525050	Uponor Brass Male Threaded Adapter, 1/2" PP-RCT x 1/2" NPT	10
PR5527575	Uponor Brass Male Threaded Adapter, 3/4" PP-RCT x 3/4" NPT	10
PR5521010	Uponor Brass Male Threaded Adapter, 1" PP-RCT x 1" NPT	10
PR5521313	Uponor Brass Male Threaded Adapter, 1 1/4" PP-RCT x 1 1/4" NPT	6
PR5521515	Uponor Brass Male Threaded Adapter, 1 1/2" PP-RCT x 1 1/2" NPT	4
PR5522020	Uponor Brass Male Threaded Adapter, 2" PP-RCT x 2" NPT	4

ASTM F1960 ProPEX LF brass adapter (socket fusion)



Part no.	Part description	Pkg. qty.
PR4515050	Uponor ProPEX LF Brass Adapter, 1/2" PP-RCT x 1/2" PEX	10
PR4517575	Uponor ProPEX LF Brass Adapter, 3/4" PP-RCT x 3/4" PEX	10
PR4511010	Uponor ProPEX LF Brass Adapter, 1" PP-RCT x 1" PEX	5

Uponor PP-RCT accessories

Part no.	Part description	Pkg. qty.
PR4511550	Uponor ProPEX LF Brass Saddle Adapter, 1½"/¾" PP-RCT x ½" PEX, for Outlet Fusion	5
PR4512075	Uponor ProPEX LF Brass Saddle Adapter, 2"/¾" PP-RCT x ¾" PEX, for Outlet Fusion	10

ASTM F1960 ProPEX LF brass saddle adapter (socket fusion)



Accessories

Part no.	Part description	Pkg. qty.
PR6071000	Uponor PP-RCT Repair Plug	10

Repair plug



Use the PP-RCT marking guide to mark the weld (or stab) depth on Uponor PP-RCT pipes when socket fusing.

Part no.	Part description	Pkg. qty.
PR6041000	Uponor PP-RCT Marking Guide	10

Marking guide



Notes

Lined area for notes.



Uponor Inc.
5925 148th Street West
Apple Valley, MN 55124 USA

T 800.321.4739
F 952.891.2008

uponor